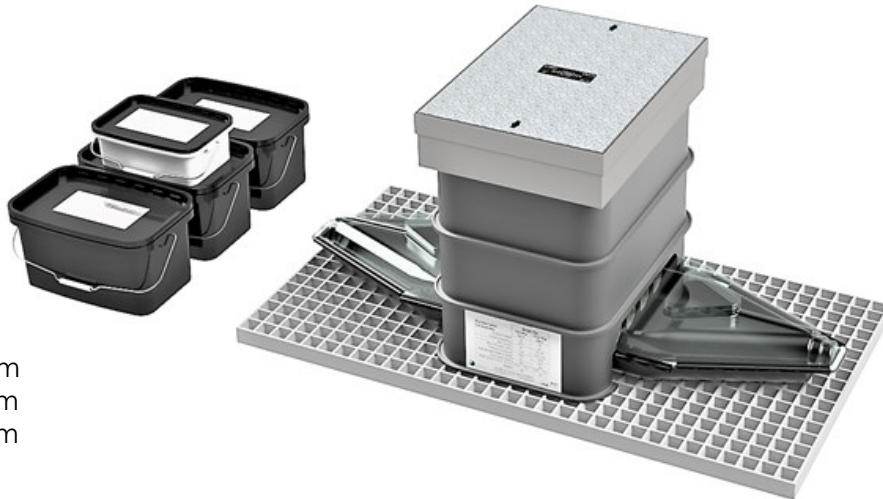


## LVD/FLB/2/MK3/B

Part Number **NGED - 58585-16** (with Earth Kit)

Part Number **SSE - 58585-74** (with Location Pillars)



L = 1223mm  
W = 653mm  
H = 570mm

### Application:

- 70-300mm<sup>2</sup> 3 core CNE cable.
- 70-300mm<sup>2</sup> 4 core SNE cable (using conversion kit).

### Features:

- A 'pre-cast' 2 Way Link Box complete with height adjustable concrete infill cover rated to BS EN124 B125 (12½ ton), pavement access chamber and approved 2 part polyurethane resin for shell encapsulation.
- A factory assembled and 'pre-cast' turret which accommodates solid links (3 supplied) or fused links to BS88 (83mm crs).
- A cast iron bell cover (insulated) for reliable protection against water ingress.
- A neutral test facility and also generation/fault location connection point within the bell cover.
- All phase and neutral/earth mechanical connectors are factory fitted and utilise shear-head bolt technology for consistent and reliable performance.
- Phase Identification Tags (L1, L2 & L3) are factory fitted in each pocket and remain highly visible with links/fuses in place.

### Product Testing:

- Type tested to:- ENA Technical Specification 09-23 Iss 2 2017 - Link Boxes.

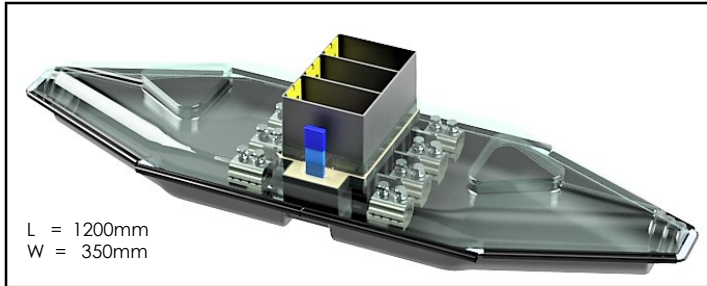
### Accessories:

- **Solid Link Assembly:** Part N° 58401-24
- **4 Core SNE Conversion Kit:** Part N° 58585-57
- **Phase Pocket Cover:** Part N° 3883-020

**LVD/FLB/2/MK3/B**

**Product Features**

**- Link Box Unit Assembly - Joint Shells ...**



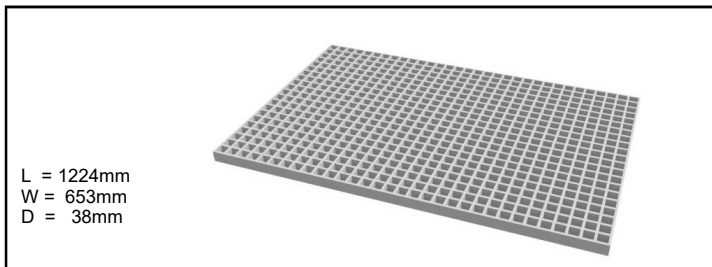
**Material:**

- Upper - Clear PET-G
- Lower - ABS

**Resin Fill:**

- 26 litres

**- Open Mesh Support Base ...**



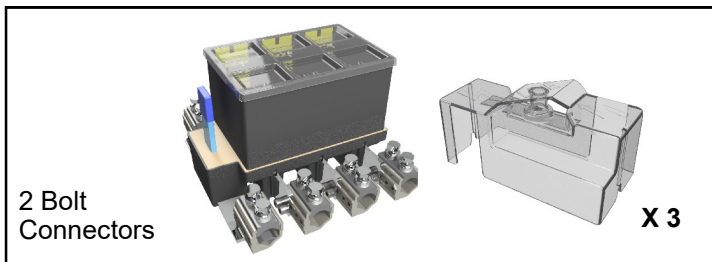
**Material:**

- ISO Resin/Fibre

**Weight:**

- 16kg

**- Insulated Pre-Cast Turret Assembly, Phase Pocket Covers & Drip Tray....**



**Turret Material:**

- ABS - High Resistance to impact and heat

**Weight:**

- 6 kg

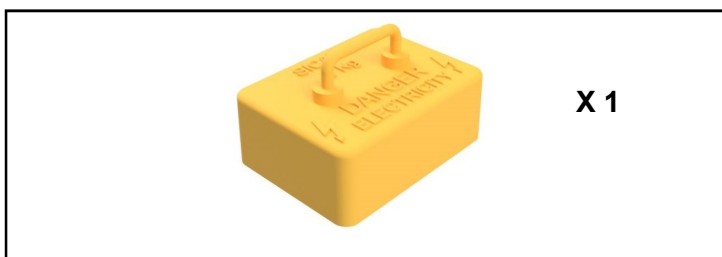
**Drip Tray (x1) Material:**

- Clear HIPS

**Phase Pocket Cover (x3) Material:**

- Clear PET-G

**- Bell Cover (Insulated)....**



**Material:**

- Cast Iron (Insulated)

**Weight:**

- 9 kg

**- Pavement Access Chamber Assembly....including Height/Level Adjustment**

