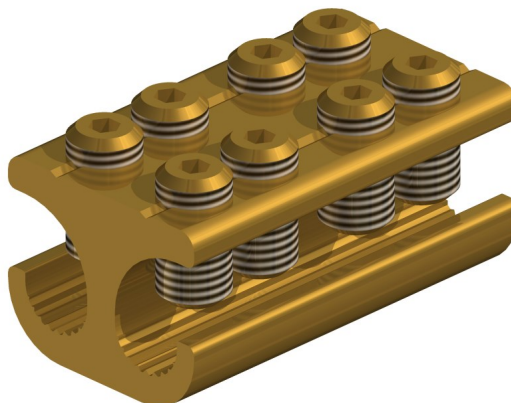


**MB21/1 XL Connector**



**Principle Application:**

Stranded and solid shaped service conductors.

**Range:**

Product Reference (Part Number)	Type	Core c.s.a. (mm <sup>2</sup> )	
		Min	Max
MB21/1 XL (4857-527)	Branch	4*	35

Note: For jointing other core configurations/sizes please contact Sicame Engineering Dept

The **Sicame MB21/1XL** mechanical connector is designed for service branch connections on stranded or solid cable. The ferrules are manufactured in brass for suitability of jointing both aluminium and copper conductor cores.

**Secondary Application:**

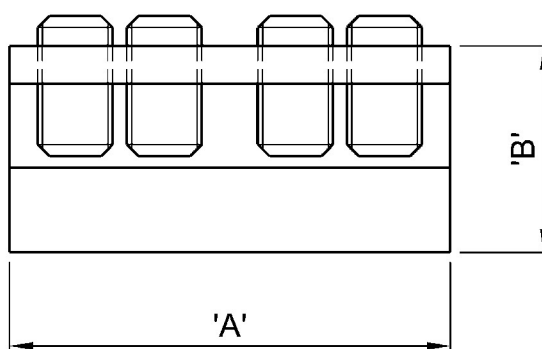
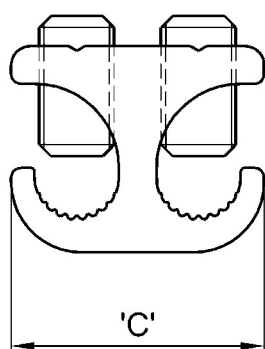
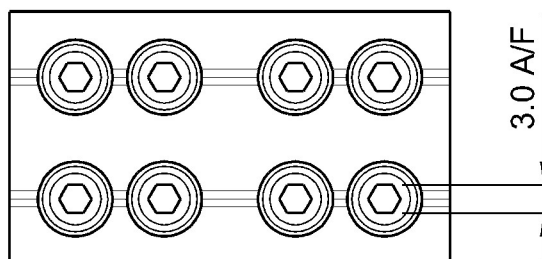
Stranded and solid circular conductors.

Product Reference (Part Number)	Type	Core c.s.a. (mm <sup>2</sup> )	
		Min	Max
MB21/1 XL (4857-527)	Branch	4*	35

Note: For jointing other core configurations/sizes please contact Sicame Engineering Dept

**MB21/1 XL Connector**

**Physical Dimensions**



Connector Reference (Part Number)	Dimensions (mm)		
	'A'	'B'	'C'
MB21/1 XL (4857-527)	47.0	22.0	27.0

**Material:**

Copper Alloy

**Test Specification:**

BS EN 61238-1. Test Report No: TTR/267 and 275

**Fitting Instructions:**

1. Cut the cables to length and strip the core insulation equal to the length of the connector +3mm.
2. Thoroughly abrade all conductors to be jointed.
3. Align cores within connector and tighten screws on each side of the connector consecutively, until tight.

**Note:**

\* Conductor cores 4mm<sup>2</sup> and below should be doubled, and if necessary doubled again, to achieve the necessary cross-sectional area.