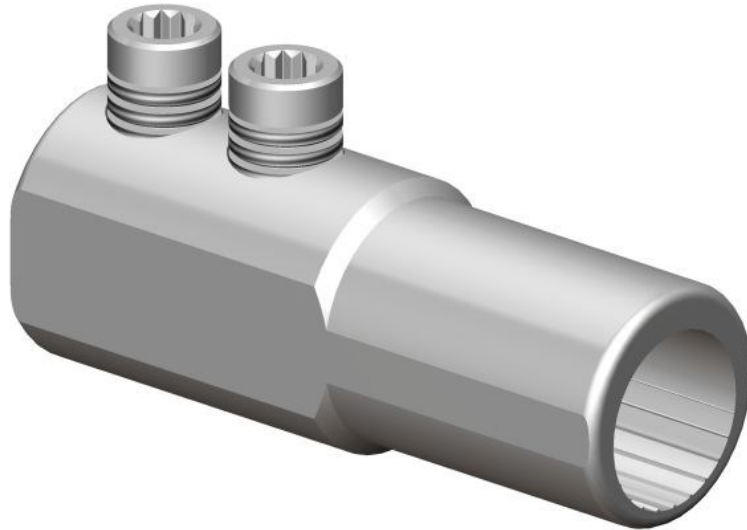


ML5 Connector



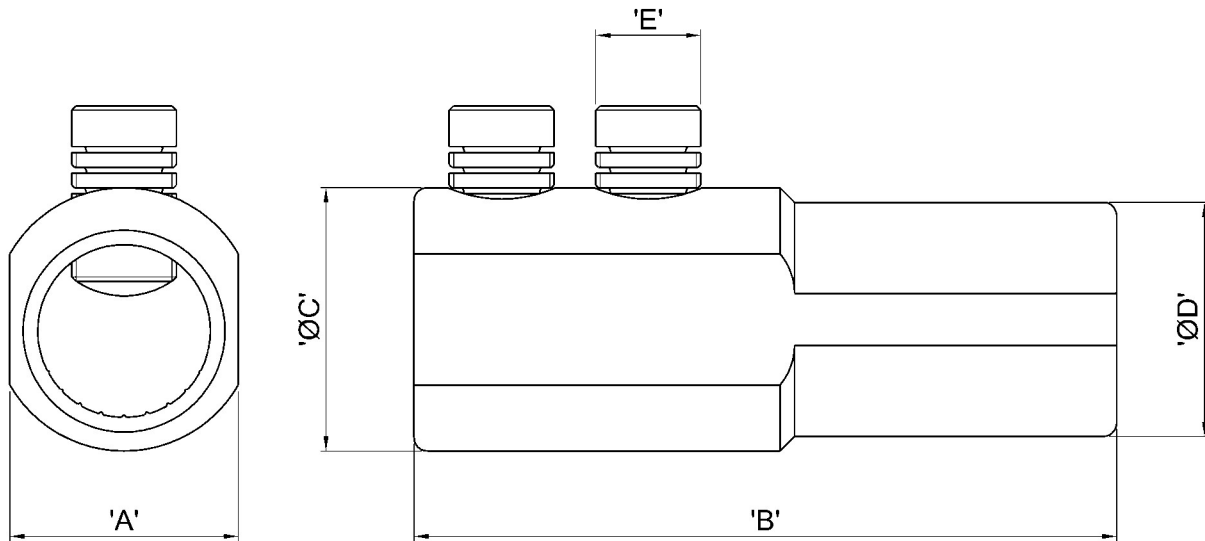
Principle Application:

Termination of solid cored conductors.

Range:

Product Reference <i>(Part Number)</i>	Conductor Core C.S.A. (mm ²)	
	min.	max.
ML5 <i>(51801-88)</i>	480 (4 x 120)	600 (4 x 150)

ML5 Connector



Connector Reference (Part Number)	Dimensions (mm)				
	'A'	'B'	'ØC'	'ØD'	'E'
ML5 (51801-88)	39	120	45	40	M18

Material:

Aluminium Alloy